

Solids Flow Meter MULTISTREAM G

- Flow measurement using the deflection chute principle
- Dust-tight housing
- Compact design
- Inexpensive, easy integration



Application

The MULTISTREAM G Solids Flow Meter is a closed-loop inline measurement system for the continuous monitoring of bulk material flows.

With a flow rate range of 4 t/h to 1000 t/h (1250 m³/h), the measuring device is suitable for powdery to granular bulk solids with a particle size of up to 30 mm and can be used for the following purposes:

- Flow and consumption measurement
- Balancing
- Batching

When used in conjunction with an adjustable prefeeder, MULTISTREAM G can also be used as a feeding system; however, this must be requested separately.

Thanks to its enclosed, compact design, the measuring device is particularly well-suited for cost-effective, easy integration into processes with limited space or those that require a closed feed path.

Construction

The standard scope of delivery for the MULTISTREAM G measuring device includes:

- Sheet steel housing
- Guide and measuring chute
- Load cell
- Transmission of the measuring load to the load cell located outside the bulk material chamber
- Cable junction box

The load cell, which is located outside the bulk material chamber, allows for trouble-free operation at bulk material temperatures of up to 100 °C. Please inquire separately regarding higher bulk material temperature ranges.

Function

In the deflection chute measuring device, the feed rate is measured using a reaction force.

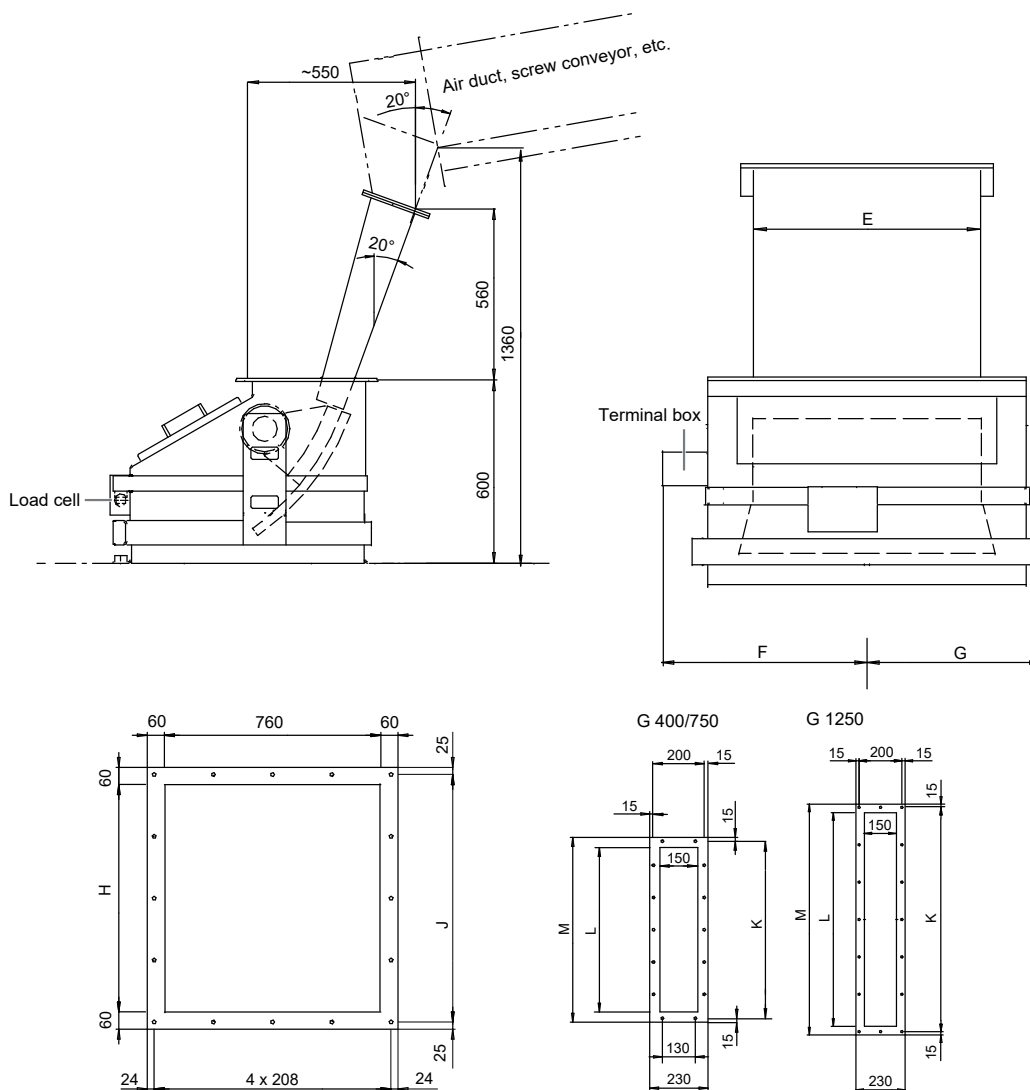
The flow of bulk solids is evened out and stabilized by a guide chute and then directed smoothly onto the curved measuring/deflection chute.

In the measuring chute, the bulk solids are subjected to acceleration in the radial direction. The resulting reaction force on the measuring chute is detected by the load cell.

If higher accuracy is required, verification measurements are necessary to allow calibration of the measuring device without interrupting the bulk material feed."

These additional components require weighing of the pre-silo and must be requested separately.

Dimensions [mm]



Design	E	F	G	H	J	K	M	L
G 400	400	470	380	550	2 x 310	3 x 150	480	400
G 750	650	593	505	800	4 x 217.5	4 x 127.5	730	650
G 1250	1000	770	680	1150	5 x 244	6 x 175	1080	1000

Technical Data

Solids Flow Meter MULTISTREAM			
Design	G 400	G 750	G 1250
Feed rate	min. 4 t/h ... max. 400 m ³ /h (max. 1000 t/h)	min. 16 t/h ... max. 750 m ³ /h (max. 1000 t/h)	min. 40 t/h ... max. 1250 m ³ /h (max. 1000 t/h)
Accuracy	±2 % of the nominal feed rate		
Adjustment range	1 : 5		
Operating pressure	-2 mbar to -8 mbar, variability ±2 mbar		
Weight	155 kg	250 kg	390 kg
Ambient temperature	-30 °C ... +60 °C		
Bulk solids temperature	max. 100 °C (optional 200 °C)		
Bulk material density	min. 0.4 t/m ³		
Grain size	max. 10 mm (individual grains up to 30 mm)		
Flow properties	Non-adhesive, powder-like to granular		

Accuracy

The specified accuracy applies to the maximum feed rate (nominal feed rate) in the range of 20 % to 100 % (measuring range 1:5) under the following conditions:

- Constant material properties (flow characteristics, moisture, temperature, grain size)
- Installation and adjustment in accordance with our installation and adjustment instructions

Additional requirements

If you have any additional special requirements, please submit a separate request. Specific requirements could be:

- Models for abrasive bulk solids
- Models for Ex applications
- Models for bulk material temperatures >100 °C
- Greater accuracy
- Use as feed system

Order data

Apart from the order numbers, in order to process your request quickly and smoothly we require the following order data:

Material data

Bulk density [t/m³]

Bulk solids

Feed rate range [t/h]

from

to

Order Numbers

Design	Order number
MULTISTREAM G Solids Flow Meter	
G 400, max. 400 m ³ /h	F021140.01
G 750, max. 750 m ³ /h	F021140.02
G 1250, max. 1250 m ³ /h	F021140.03

Documentation	Order number
MULTISTREAM G Operator and Service Manual	
German	D707380.01
English	D707381.01
French	D707382.01

A set of documentation is included as standard. If you need additional sets, please order them separately. Please always specify the language version you prefer.

